



MiroPure

UV LED NAIL LAMP

USER MANUAL

Model: Star 5

I LOVE ME

support@miropure.co

www.miropure.co

ACTIVATE YOUR 12-MONTH WARRANTY & GET EXCLUSIVE GIFT

Register within 7 days after receiving your new product.



Use your phone camera to scan me
& start chatting

or visit: m.me/MiopureOnline



Or Visit:

www.miopure.co/warranty



NOTE

1. Please follow the instructions before use.
2. Try different curing times to achieve better results.
3. Make sure the gel used is formulated to cure in UV light

A Big Thank You

We're thrilled that you have chosen to purchase the nail lamp. At MiroPure, we're committed to providing you with products that enhance your daily life. We also aim to give our customers excellent support. Should you have any questions or feedback about your new product, simply get in touch with our customer support team at:

1-855-449-9888

or by email at: support@miropure.co

Enjoy your new product!

Contents

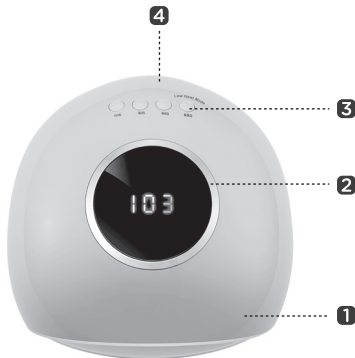
1	Items included	01
2	Parts	01
3	Product instruction	02
4	Operating Instructions	02
5	Technical Specifications	03
6	Prepare	04
7	Tips & Tricks	05
8	Protect	06
9	Steps for Reference	07
10	Cautions	08
11	FAQ	09

01 ITEMS INCLUDED

- ❶ UV LED nail lamp main body
- ❷ DC adapter
- ❸ Instructions

02 PARTS

- ❶ Infrared sensor
- ❷ LCD digital display
- ❸ Time button
- ❹ Adapter connector

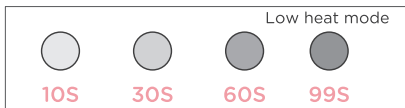


03 PRODUCT INSTRUCTION

UVLED NAIL LAMP is designed for nail art amateur and professional nail experts, the main function is fast curing UV gel/ Builder/ LED gel.

04 OPERATING INSTRUCTIONS

- 1 Connect the nail lamp to the power adapter. The nail lamp will be in standby mode.
- 2 10S/30S/60S/99S (Low heat mode). Choose the correct time according to the curing time of the gel.
- 3 When the nail lamp fails to reach the set time, press the timer button to enter the standby state. All timers will be reset.
- 4 Automatic infrared sensor, the light will automatically light when the hand is placed in the nail lamp, the default maximum working time is 120 seconds.



- 5 The 10S/30S/60S settings have a memory function and the nail lamp will use the last used time setting as the default.
- 6 Press the 99S button to select low heat mode and the output power will be automatically incremented.
- 7 The display shows a countdown timer when a time mode is selected and counts upwards when the lamp is activated by the infrared sensor.

05 TECHNICAL SPECIFICATIONS

- 1 33 LEDS
- 2 Maximum power: 48W
- 3 Adapter: Rated input 100-240V 50/60Hz
Rated output DC 24V
- 4 Size: 21cm*20cm*12cm
Wavelength: 365nm+405nm

06 PREPARE

Preparing your nails properly will help the gel polish adhere to your nails. Find a well-ventilated, clean working space for the Gel Polish application. Do not apply outdoors or in direct sunlight as product is light sensitive. Remove any existing polish from nails then wash and thoroughly dry hands. Push back cuticles with the slanted edge of the manicure stick, it's important that the cuticle area is clean and free from debris when you apply the gel as it may stop the gel from adhering to the nail.

07 TIPS & TRICKS

We recommend applying the gel first to both thumbs and cure them together. Then apply the gel to the other four nails on one hand and cure. Repeat the same steps on the other hand.

For best results, apply in thin precise layers. To remove excess product from the brush, when opening the bottle, circle the inside neck of the bottle with the brush.

DO NOT TOUCH NAILS AFTER CURING. The curing process will leave a slight moisture layer on the nails at the end of each cure, but your nails will be ready for the Color Gel Polish or the Gel Base Top Coat application. The moisture layer will be removed with Gel Cleanser at the end of the manicure.

08 PROTECT

Apply a thin layer of the gel base & Top coat. Make sure the gel does not touch the cuticle or skin alongside the nails. Cap the free edge of the nail by running the brush along the nail tip. If necessary, use the manicure stick to clean the cuticle area before curing. Place nails into UV LED lamp and cure for 30 seconds.

Remove the moisture layer using the gel cleanser and lint-free wipes.



09 STEPS FOR REFERENCE



00. Metal gel polish kit



01. Shape your nails



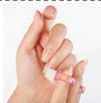
02. Gently push back cuticles



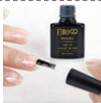
03. Remove extra cuticles or rough skin



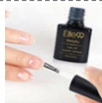
04. Buff, smooth and shine nails



05. Clean nails



06. Apply base coat and UV curing for 60s



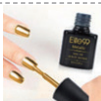
07. Apply reinforced gel



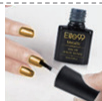
08. UV curing for 60s



09. Wipe off any stickiness



10. Apply metallic gel twice using thin layers and cure for 60 secs each time



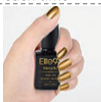
11. Apply reinforced gel again



12. UV curing for 60 secs without removing stickiness



13. Apply top coat and UV curing for 120 secs



14. Manicure is complete

10 CAUTIONS

- ❶ Please read the instructions carefully before using.
- ❷ Please use the device correctly as intended.
- ❸ Do not allow the device to come into contact with liquids.
- ❹ Stop using once the desired curing time has been reached.
- ❺ Unplug the adapter when not using.
- ❻ Do not use if the adapter is damaged.
- ❼ Do not use in excess of 600 secs, otherwise lamp life may be reduced.
- ❽ Never look directly at the UV light. Long-term exposure may cause damage to eyes and skin.

11 FAQ

WHY CAN'T NAIL POLISH DRY COMPLETELY?

- A. It is normal for the primer to not dry when it is cured. It is the adhesive between the nail and the glue and will dry on its own.
- B. There are two types of sealant on the market, one is disposable and the other is washable. For washable sealants, simply rinse the surface with water. If the nail care solution is not bright enough, you can apply some more. However, do not apply too thick an amount on each layer.
- C. Short curing time will also lead to it not drying properly.

WHY DOES NAIL POLISH FALL OFF EASILY AFTER CURING?

- A. The polish is not correctly in place, which leads to weakening of the adhesion gel.
- B. After polishing, the fingernail is stained by grease or not clean enough.
- C. The gel coating is clogged and easy to become corrugated.
- D. Nail adhesion is poor.
- E. The metabolism of the nail causes the protective layer of grease to fall off.
- F. Improper use of the first or second layer of nail polish can also cause it to fall off.

- G. If the glue does not cover the edge of the nail, it will also cause the nail polish to fall off.

DOES THIS NAIL LAMP WORK FOR ALL NAIL POLISH OR JUST GEL?

UV and LED nail dryers only work with gel polishes. For regular nail polish, it is suggested to use a quick-dry top coat and it leave it to air dry.

WILL THIS NAIL LAMP NEED TO HAVE THE BULBS REPLACED OVER TIME?

LED bulbs are not replaceable and have a lifespan of about 50,000 hours.

WHY DO YOU FEEL MILD PAIN WHEN DRYING YOUR NAILS USING A UV NAIL LAMP?

- A. The main reason is that nail polish burns during the curing process. If you feel pain during the drying process, simply remove your fingers and let the pain subside before putting them back under the lamp.
- B. The second reason may be that the nail polish can reduce the thickness of the nail during frequent curing, which can make you feel a little more pain.
- C. Another possible reason is that some nail polish has stuck to the skin.

This device complies with Part 15 of the FCC Rules.

CUSTOMER SERVICE



Please scan QR code & start chatting
(Typically replies instantly):



Use your phone camera to scan me
& start chatting

or visit: m.me/MiropureOnline



1-855-449-9888



support@miropure.co



www.miropure.co



Made in China