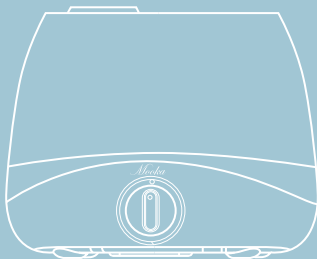


Mooka

AIR
HUMIDIFIER



USER MANUAL



WARRANTY

- Your product is guaranteed by us for 12 months from your original date of purchase. If you want to extend your warranty for one more year, please do not hesitate to contact us.
- Become a Mooka member and get access to exclusive benefits, such as updates about the latest Mooka products.

1. Share your experience by leaving an honest review.



Please leave a review with accompanying photos or a video would be greatly appreciated!



Add photos/video

Submit

2. CONTACT US

Please scan the QR-code to start chatting (Live chat).



SCAN ME

or visit:

m.me/MookaOfficial

or

<http://www.mooka.co/warranty>

Thank you for choosing this product. In order to understand how to properly use this product, please read this instruction manual carefully before using the product, and retain it for future use. In the event that you need assistance using the appliance, please contact our customer service.

CONTENTS

Package Contents-----	02
Specifications-----	02
Safety Instructions -----	03
Getting To Know Your Humidifier-----	05
Optimal Use-----	06
Operation-----	07
Cleaning-----	08
Troubleshooting Guide-----	09

PACKAGE CONTENTS

1 x Humidifier

1 x User Manual

SPECIFICATIONS

Input voltage	100-220V, 50/60Hz
Rated Power	14W
Water Tank Capacity	1.32 gallons (5L)
Moisture Output	250ml/h
Operating Time	10-50 hrs
Recommended Room Size	215-377ft ² (20-35m ²)
Dimensions	11.8*9.8*7.8 inches
Weight	2.53 lbs

SAFETY INSTRUCTIONS

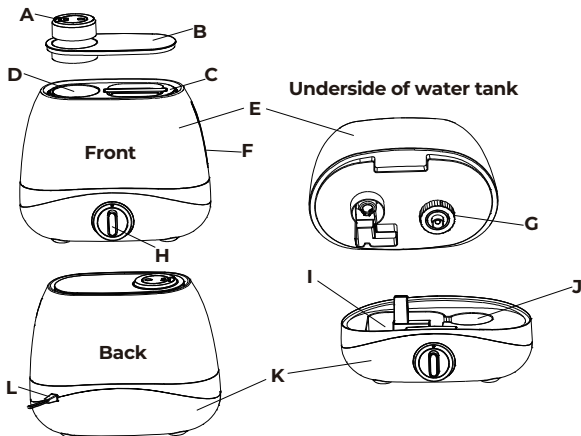
Please read the instruction manual carefully before using the appliance.

- Before switching on the unit, make sure that the household mains voltage corresponds to the operating voltage of the unit.
- Place the unit on a flat, moisture-resistant surface. Distance from the walls should not be less than 15 cm.
- Do not direct the nozzle of the unit at wooden furniture, electrical appliances, books or any objects which can be damaged by moisture.
- Do not place the humidifier in places subject to direct sunlight, high temperatures, near computers or other sensitive electronic appliances.
- Do not switch on the unit without water in it. Disconnect the unit from the power supply when the water tank becomes empty.
- Always unplug the unit before taking the water tank out of the unit.
- Do not block steam outlets
- Do not immerse the unit, the power plug or the power cord into water or other liquids.
- Do not move or tilt the unit during its operation.
- Do not touch the unit's plug with wet hands. Unplug the unit before

moving it to another location.

- Before using the unit, closely examine the power cord and make sure that it is not damaged. Do not use the unit if the power cord is damaged.
- Use only the original removable parts which are supplied with the unit. Do not dismantle the unit yourself. If the unit malfunctions, please contact customer service.
- Always unplug the unit and pour out water from the water tank when cleaning the unit, or if the unit will not be used for a long period.
- Do not let children operate the unit.
- For indoor use only.

GETTING TO KNOW YOUR HUMIDIFIER



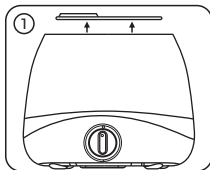
- A. Nozzle
- B. Top Cover
- C. Water Tank Handle
- D. Mist Tube
- E. Water Tank
- F. Water Tank Window

- G. Water Tank Cap
- H. The power knob
- I. Transducer
- J. Inner Chamber
- K. Base
- L. Power Line

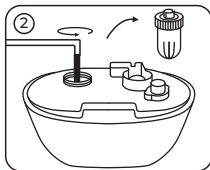
OPTIMAL USE

- Before you set up the humidifier, select a location that is firm, level, and flat.
- Please do not place the humidifier on any carpet or towel, otherwise it may leak.
- Do not add essential oils into the water tank. Essential oils may cause damage and leakage.
- It is recommended to use distilled water to prevent mold buildup.
- We recommend cleaning once a week to prevent bacteria and mold.
The water in the water tank needs to be emptied when it is not in use, otherwise it may cause unpleasant odors.
- Do not use this humidifier in freezing temperatures. The recommend working environment is 10°C - 40°C with a relative humidity (RH) of less than 80%.
- To prevent water from spattering out of the tank, please do not open the cover when the unit is in operation.
- Make sure there is water in the water tank before turning it on.

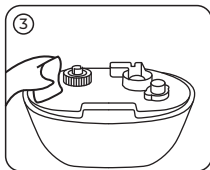
OPERATION



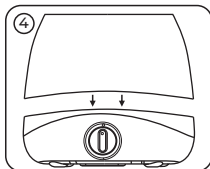
Detach the mist nozzle and turn over the tank.



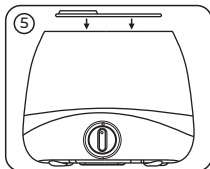
Unscrew the tank cap anticlockwise and pour some water into the tank, then screw the cap back on.



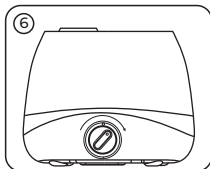
Wipe off excess water on the external surface.



Reassemble the humidifier and place it on a stable horizontal surface.



Attach the mist nozzle to the tank.



Power on the machine and rotate the mist knob to turn on and adjust mist output.

Note: A red light indicates water is running out; when this happens, the machine will shut-down automatically.

CLEANING

1. Unplug the humidifier.
2. Remove the top cover from the water tank. Rinse the nozzle and cover under clean, running water. Then set it aside to dry.
3. Remove the water tank from the base and pour out any excess water. Add some detergent and warm water into the water tank, soak for 5 minutes.
4. Clean the inside of the water tank with a cleaning brush.
5. Rinse the unit with clean water.
6. Dry all parts with a clean, dry cloth. Make sure all parts of the humidifier are completely dry before reassembling or storing.

Note:

Depending on usage and water type, cleaning to remove scale may be required weekly or every other week to optimize the unit's performance.

If you live in a hard water area, we recommend distilled water for your humidifier to help reduce the precipitation of minerals or white dust. Do not clean the unit or water tank with harsh detergents or cleaning chemicals. A declassification cartridge or humidifier cleaner capsule may be used to keep tank free of hard mineral deposits.

TROUBLESHOOTING GUIDE

Problem	Solution
The operating indicator does not light up, there is no mist.	Check if the unit is plugged in. Check if the power switch is turned on.
No mist coming out of vent.	Low water: Add water to the water tank. Check the unit is properly plugged in.
Unit has stopped working.	No or low water: Unplug unit and refill tank.
The unit produces a bad smell.	Poor maintenance or dirty water: Clean the humidifier thoroughly, and fill with fresh water.
Little mist is coming out of nozzle.	Clean nozzle.
Increased noise level.	Place humidifier on a flat, level surface.
Puddle of water forms below the base.	Switch the humidifier to a lower mist setting. Open a window to ensure proper airflow for your humidifier, or move the humidifier to a more well-ventilated room. Turn off and unplug the humidifier, then align the water tank cap with the matching opening of the inner chamber.
Red light turns on.	Low water: Unplug and refill tank.

If the above advice doesn't solve any issue you have, please contact customer service.

CUSTOMER SERVICE

Our customer service team is standing by to assist you
if you have any questions or concerns.



Please scan QR code & start chatting
(Typically replies instantly):



Scan QR Code & Start Chatting



SCAN ME

or visit:

m.me/MookaOfficial



1-855-558-8999



support@mooka.co



www.mooka.co

MooKa

HUMIDIFY YOUR WORLD STARTING NOW

Made in China